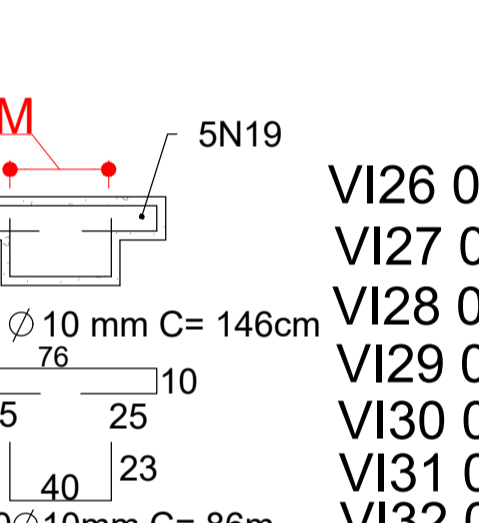
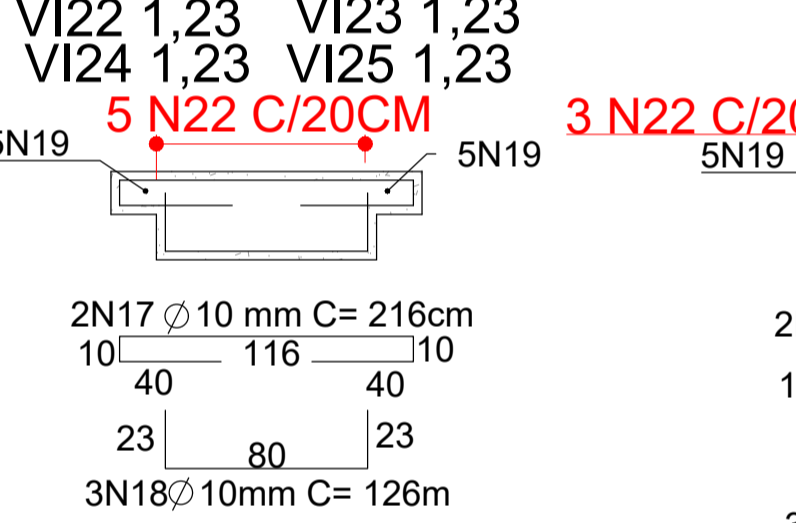
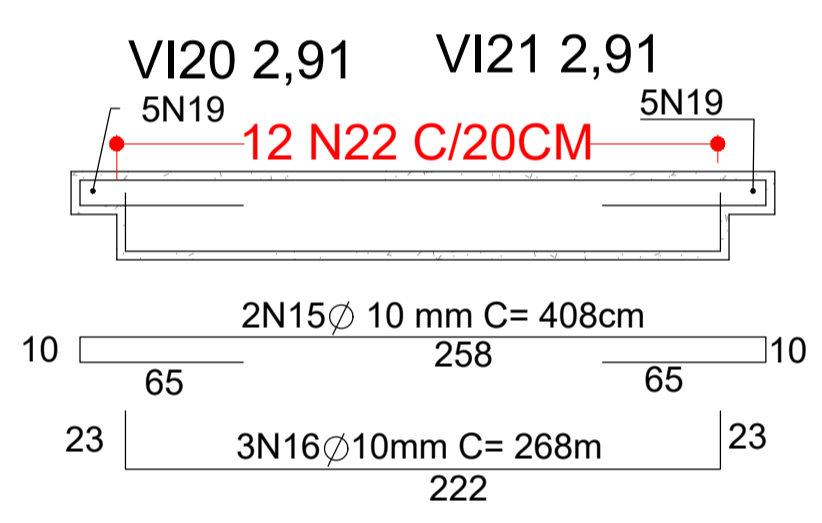
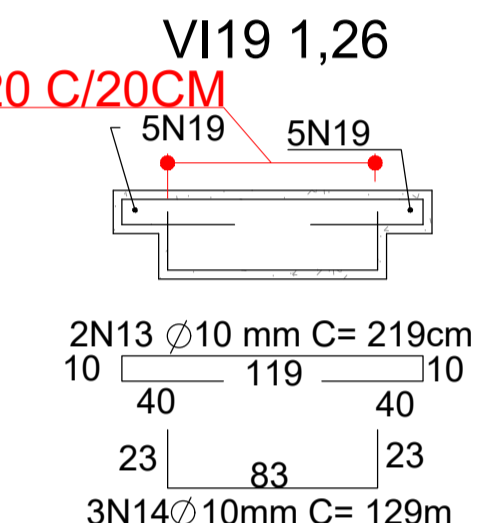
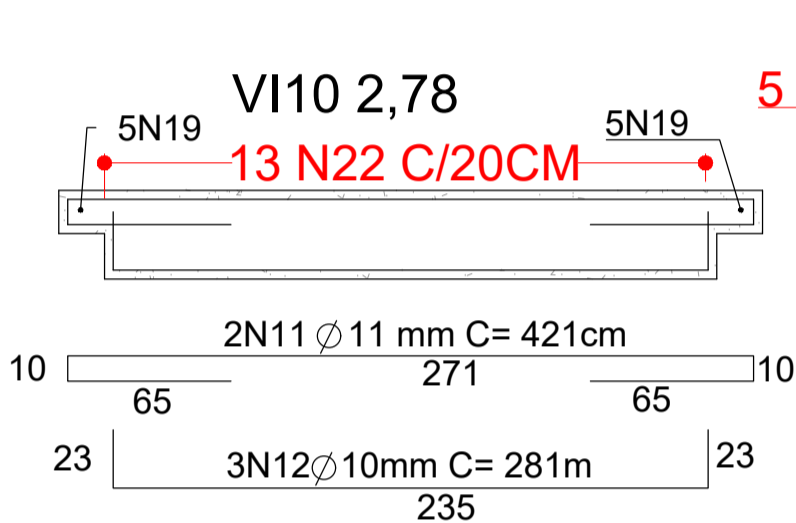
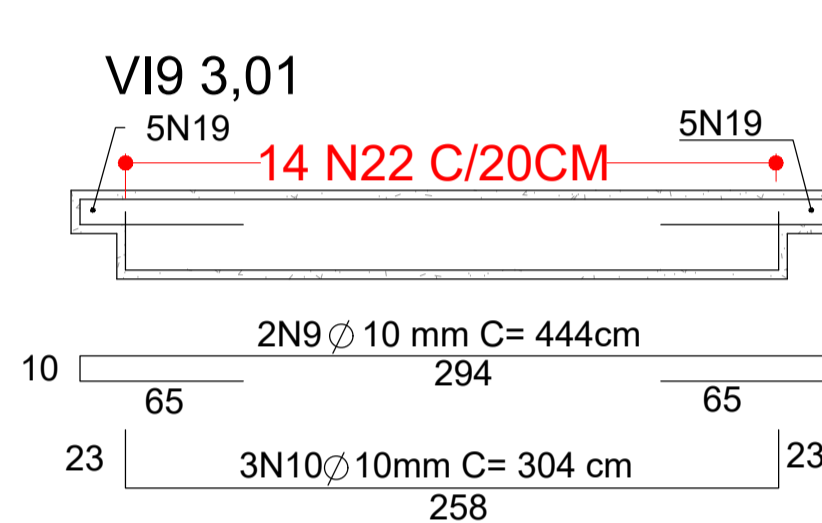
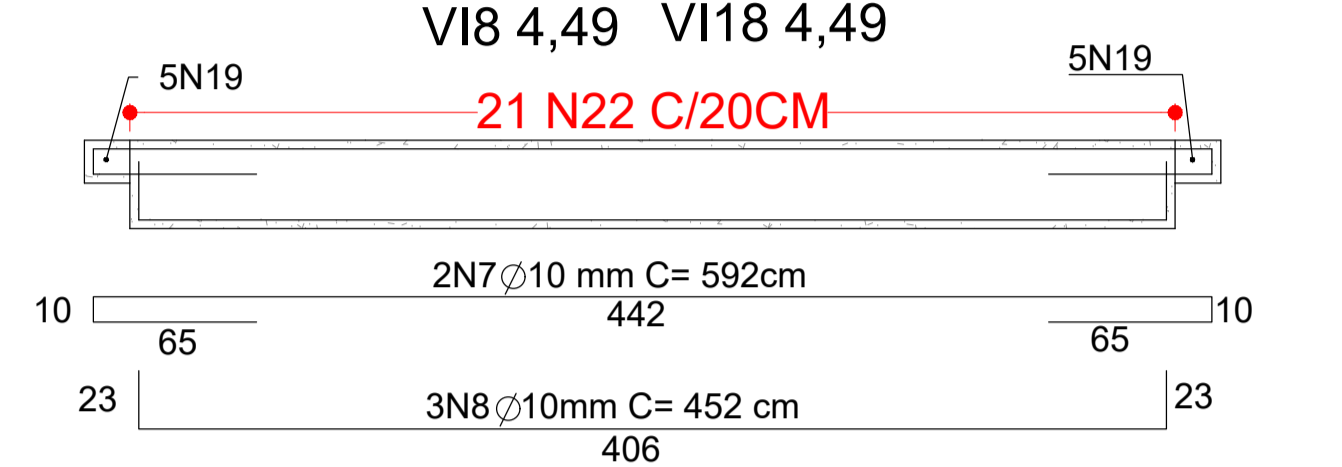
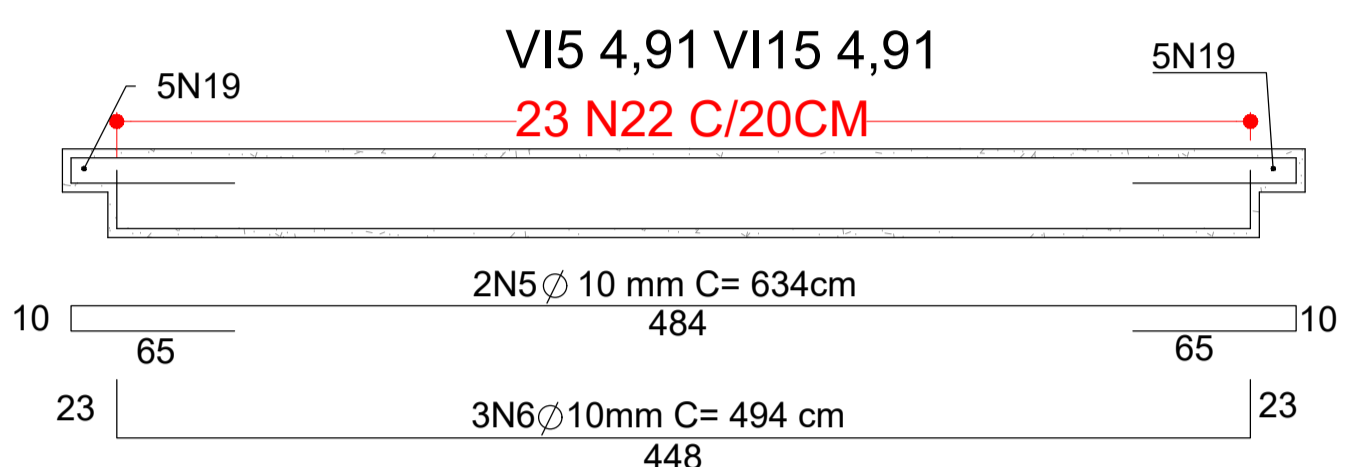
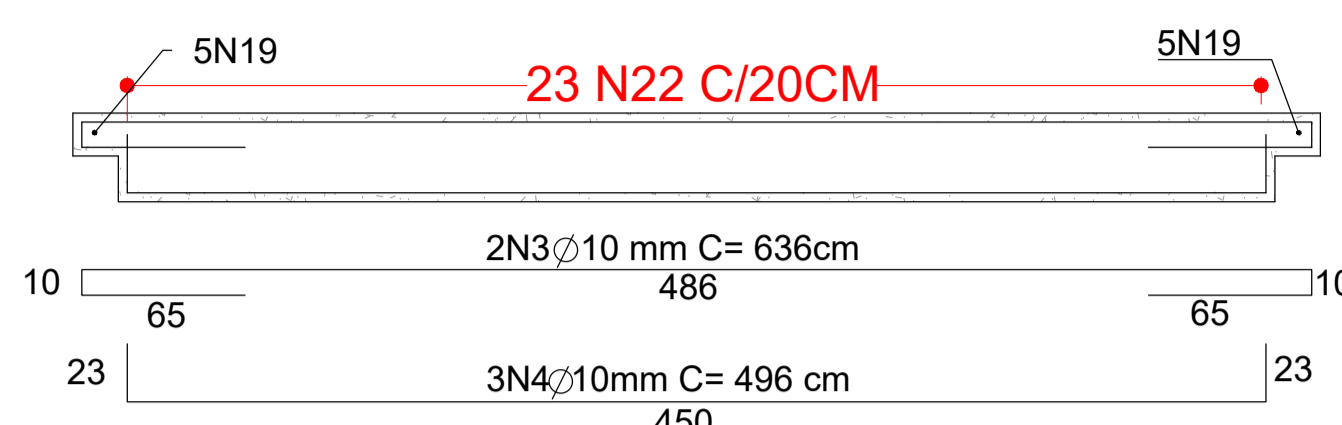
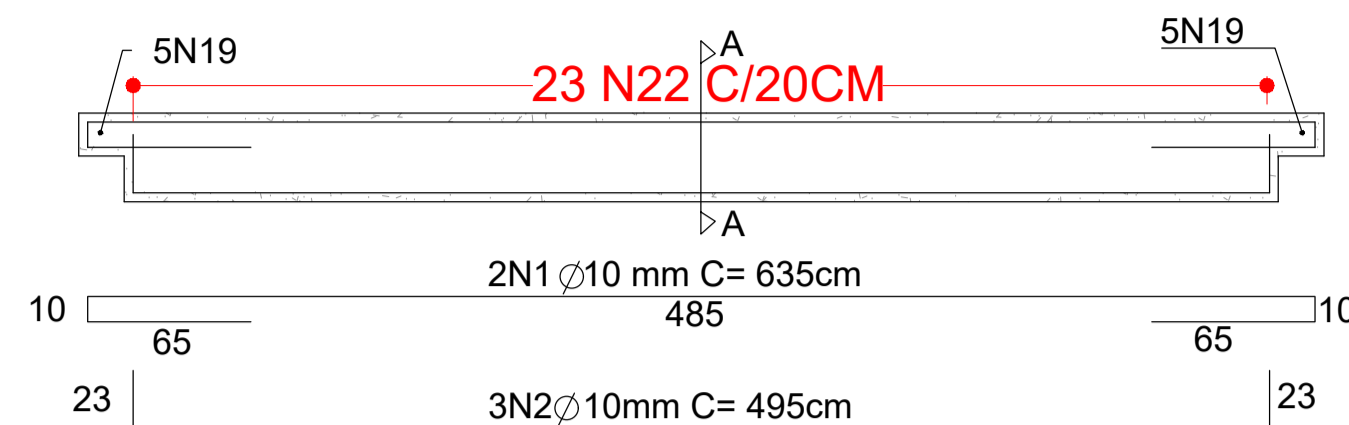


ESTRUTURAL VIGAS 15X35 PRÉ FABRICADAS

ESCALA 1:25

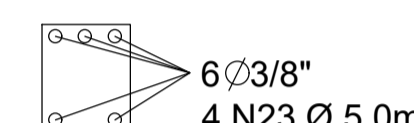
VI1 4,92 VI2 4,92 VI6 4,92 VI7 4,92
VI11 4,92 VI12 4,92 VI16 4,92 VI17 4,92

VI3 4,93 VI13 4,93

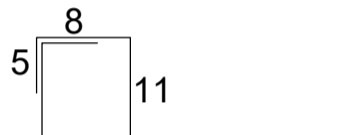


VI27 0,83
VI28 0,83
VI29 0,83
VI30 0,83
VI31 0,83
VI32 0,83

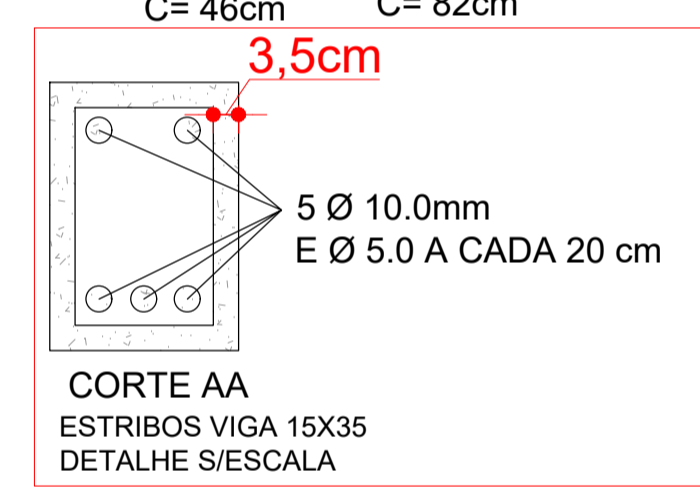
DETALHE DE CONSOLES 15X18X18



ESTRIBO CONSOLE



ESTRIBO VIGA



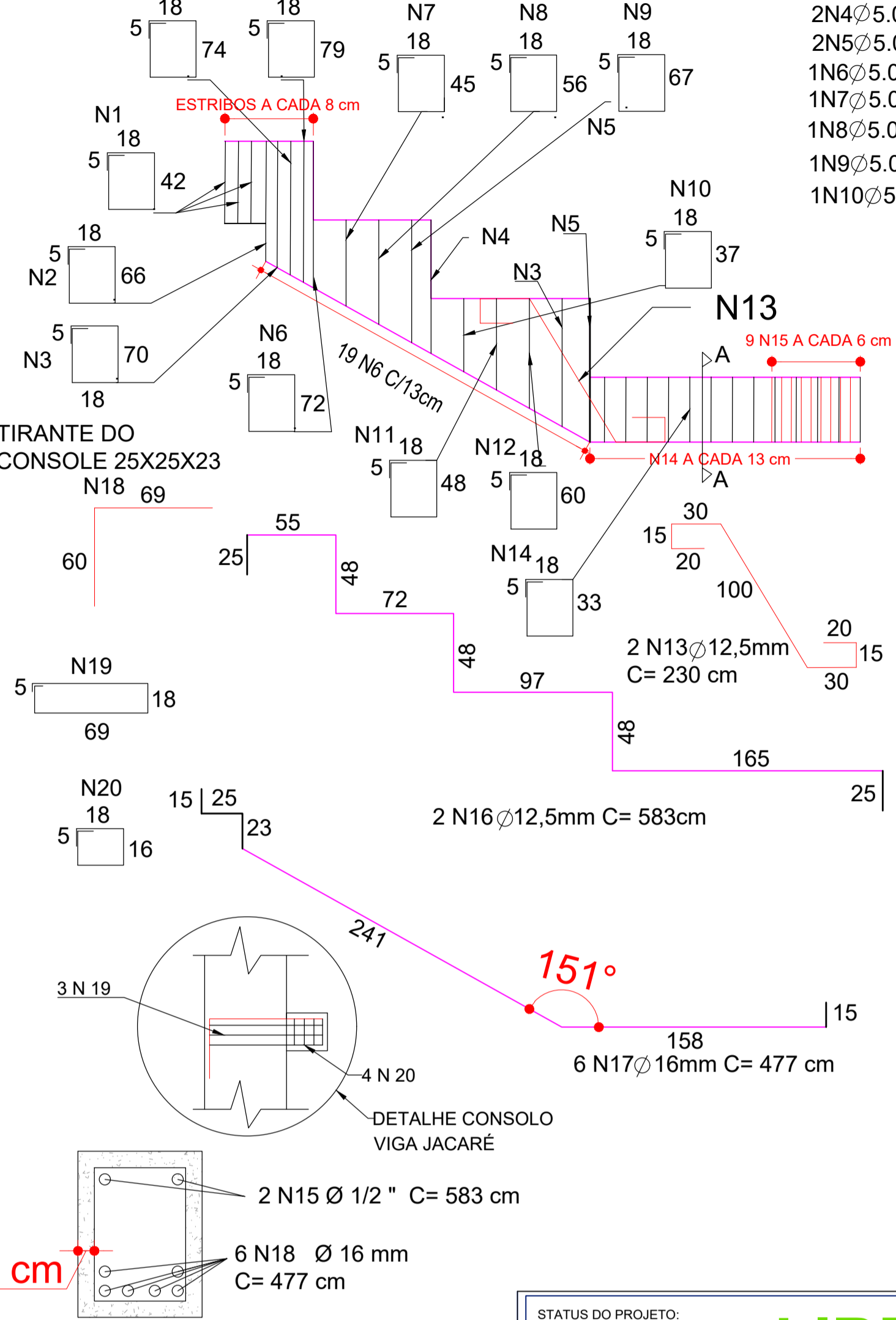
AÇO	N	DIAM. MM	QTDE.	C. UNIT	C. TOTAL
CA50	1	10	2	635	10160
CA50	2	10	3	495	11880
CA50	3	10	4	636	2544
CA50	4	10	6	496	2976
CA50	5	10	4	634	2536
CA50	6	10	4	494	2964
CA50	7	10	4	592	2368
CA50	8	10	6	452	2712
CA50	9	10	2	444	888
CA50	10	10	3	304	912
CA50	11	10	2	421	842
CA50	12	10	3	281	843
CA50	13	10	2	219	438
CA50	14	10	3	129	387
CA50	15	10	4	408	1632
CA50	16	10	6	268	1608
CA50	17	10	8	216	1728
CA50	18	10	12	126	1512
CA50	19	10	14	146	2044
CA50	20	10	21	86	1806
CA60	21	5	320	46	14720
CA60	22	5	415	78	32370

AÇO	DIAM. mm	C.TOTAL cm	PESO kg
CA50	10	42620	262.54
CA60	5	47090	72.5186

VOLUME DO CONCRETO (C-30) = 5.6 m³

ESTRUTURAL VIGA JACARÉ

VJ1; VJ2; VJ3; VJ4; VJ5; VJ6; VJ7; VJ8; VJ9



3N1 Ø5.0 C=130cm	1N11 Ø5.0 C=142cm
1N2 Ø5.0 C=178cm	1N12 Ø5.0 C=166cm
2N3 Ø5.0 C=186cm	2N13 Ø12.5 C=230cm
2N4 Ø5.0 C=194cm	13N14 Ø5.0 C=112cm
2N5 Ø5.0 C=204cm	10 N15 Ø6.3 C=112cm
1N6 Ø5.0 C=190cm	2N16 Ø12.5 C=583cm
1N7 Ø5.0 C=136cm	6N17 Ø16.0 C=477cm
1N8 Ø5.0 C=158cm	3N18 Ø16.0 C=129cm
1N9 Ø5.0 C=180cm	3N19 Ø12.5 C=184cm
1N10 Ø5.0 C=120cm	4N20 Ø6.3 C=78cm

AÇO	N	DIAM. MM	QTDE.	C. UNIT	C. TOTAL
CA60	1	5.0	27	130	3510
CA60	2	5.0	9	178	1602
CA60	3	5.0	18	186	3348
CA60	4	5.0	18	194	3492
CA60	5	5.0	18	204	3672
CA60	6	5.0	9	190	1710
CA60	7	5.0	9	136	1224
CA60	8	5.0	9	158	1422
CA60	9	5.0	9	180	1620
CA60	10	5.0	9	120	1080
CA60	11	5.0	9	142	1278
CA60	12	5.0	9	166	1494
CA50	13	12.5	18	230	4140
CA60	14	5.0	117	112	13104
CA60	15	6.3	90	112	10080
CA50	16	12.5	18	583	10494
CA50	17	16.0	54	477	25758
CA50	18	16.0	27	129	3483
CA50	19	12.5	27	184	4968
CA50	20	6.3	36	78	2808

AÇO	DIAM. mm	C.TOTAL m	PESO kg +10%
CA50	6.3	128.88	34.73
CA50	12.5	154.62	163.79
CA60	5.0	385.56	65.31

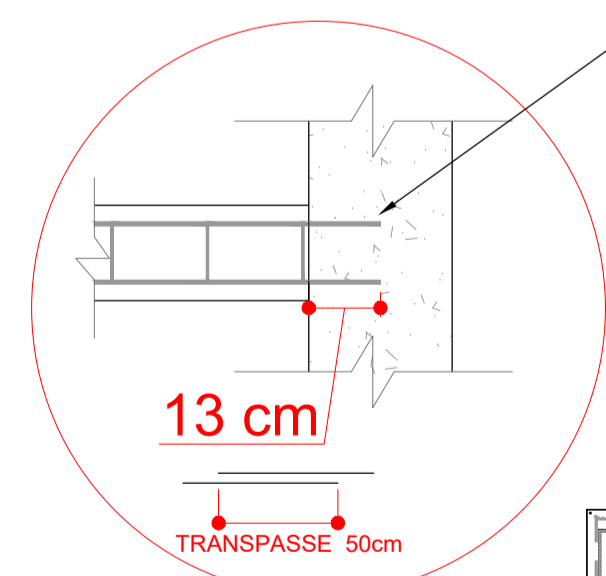
VOLUME DO CONCRETO (C-30) = 4.91 m³

ESTRUTURAL VIGAS BALDRAMES 15X35 MOLDADA IN LOCO

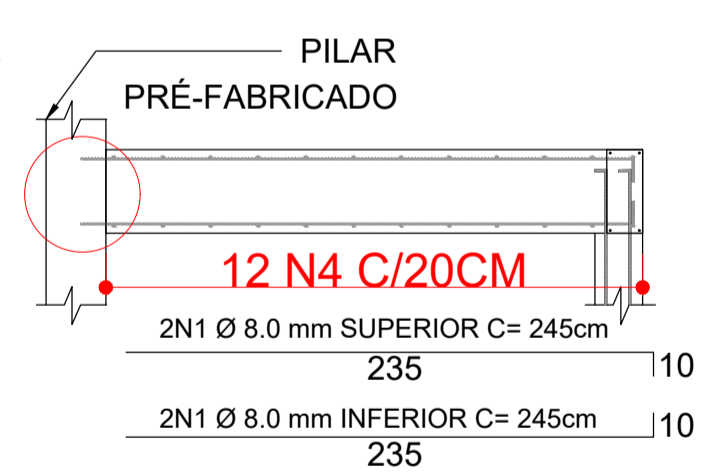
ESCALA 1:50

PARA ENGASTAMENTO DAS VIGAS BALDRAMES ARMADA IN LOCO EM PILARES PRÉ-FABRICADOS, GRAUJAR ARRANQUES PARA FIXAÇÃO DAS BARRAS DE AÇO DA CINTA DE AMARRAÇÃO COM ADESIVO ESTRUTURAL DE BASE EPÓXI

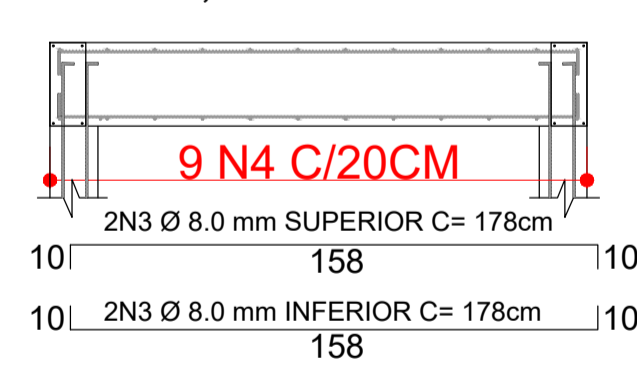
DETALHE S/ESCALA



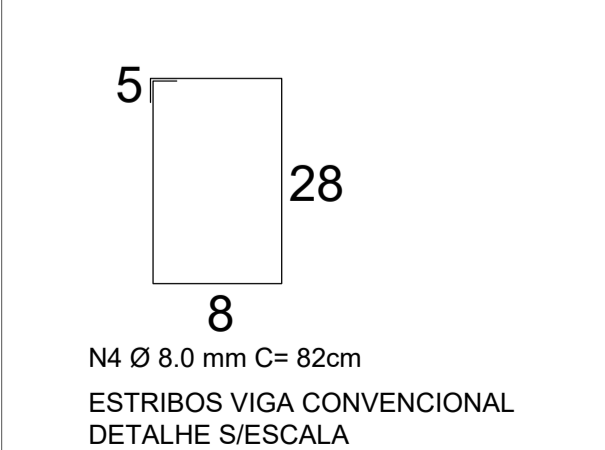
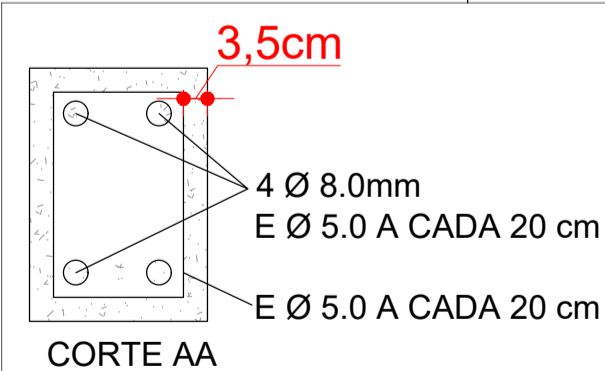
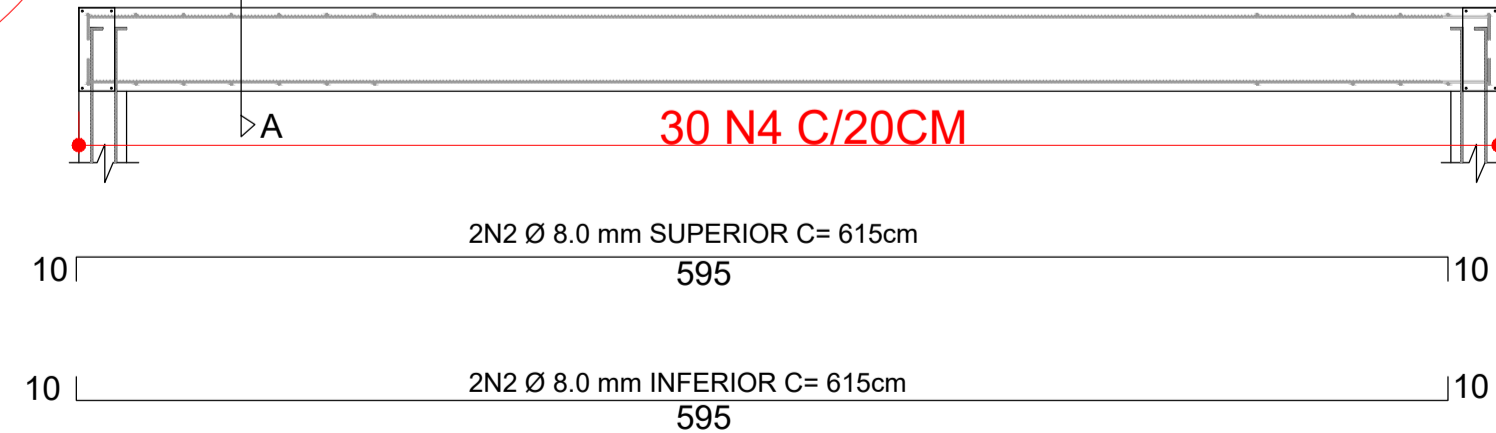
VB1 2,25m VB2 2,25m



VB5 1,65m VB6 1,65m
VB7 1,65m

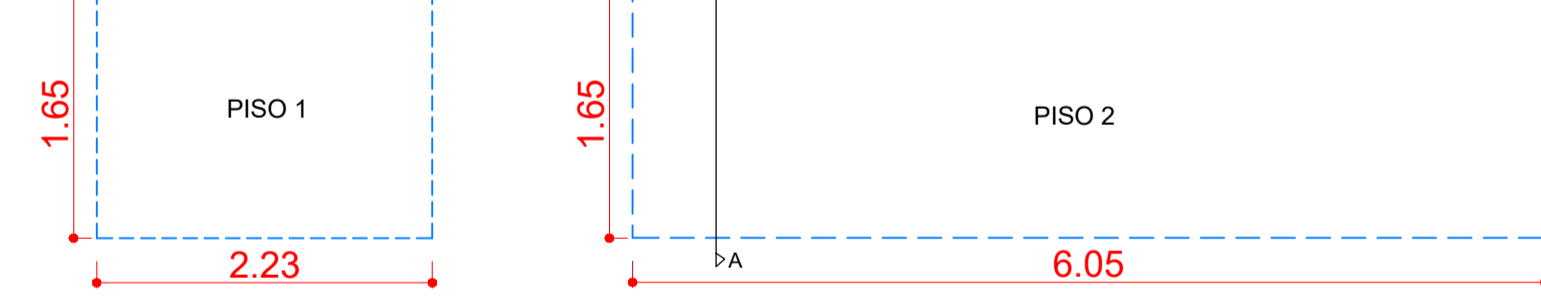


VB3 6,05m VB4 6,05m



PISO EM CONCRETO ARMADO

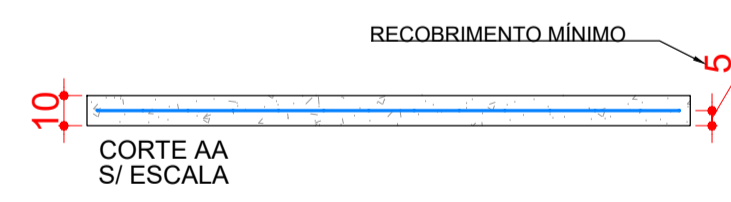
ESCALA 1:50



TELA

Tela	CA	Malha (cm)	Fios (mm)	QTDE. (m²) +10%
Q 92	60	15x15	4,2 x 4,2	15.02

VOLUME TOTAL DO CONCRETO (C-20): 1.366 m³
ÁREA DE FORMA: 2,26 m²



AÇO	N	DIAM. MM	QUANT.	C.UNIT	C.TOTAL
CA50	1	8.0	8	245	1960
CA50	2	8.0	8	615	4920
CA50	3	8.0	12	178	2136
CA60	4	5.0	109	82	8938

AÇO	DIAM. mm	C.TOTAL m	PESO kg +10%
CA60	5.0	89.38	15.14
CA50	8.0	89.96	39.09

VOLUME TOTAL CONCRETO (C-20) = 1.1m³
ÁREA DE FORMA: 8,19 m²

STATUS DO PROJETO: **LIBERADO PARA EXECUÇÃO**

APROVAÇÃO

Obra: PROJETO DE ARQUIBANCADA - ETAPA 01
RUA PIONEIROS - B. CENTRO - DOUTOR PEDRINHO/SC

PROJETO ESTRUTURAL

CLIENTE: PREFEITURA MUNICIPAL DE DOUTOR PEDRINHO

ELABORADO POR: Zandoná Assessoria e Obras

REFERÊNCIA: ESTRUTURAL DE VIGAS / PISO

Projeto/Equipe técnica: José Carlos Zandoná CREA/SC 042.499-5

Responsável técnico: José Carlos Zandoná
Revisão/Data: 12.03.2018
Nome do Arquivo: 06-2001-004-EST-000-R04 - ETAPA 01.dwg

Escala: INDICADA Und. METROS

Nº	DATA	DESCRIÇÃO	POR	REV.	APROV.	CLIENTE
R02	13/03/2018	DETALHAMENTO ESTRUTURAL	MCP	-	-	-

EST Projeto Estrutural

04.05 PMPD

Doutor Pedrinho MARÇO/2018