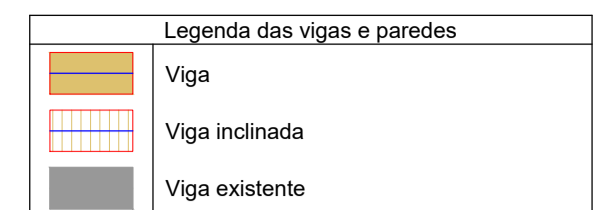
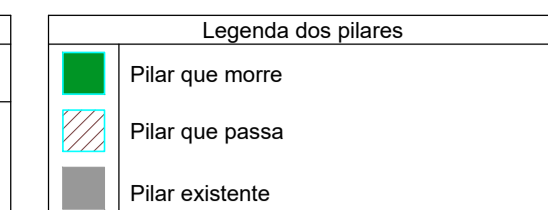


Vigas			
Nome	Seção (cm)	Elevação (cm)	Nível (cm)
V1	15x25	0	0
V2	15x35	0	0
V3	30x30	0	0
V4	15x35	0	0
V5	15x25	0	0
V6	15x25	0	0
V7	15x25	0	0
V8	15x25	0	0
V9	15x20	0	0
V10	15x25	0	0
V11	15x25	0	0
V12	15x25	0	0
V13	15x30	0	0
V14	15x30	0	0
V15	15x30	0	0
V16	15x30	0	0
V17	15x30	0	0
V18	15x30	0/-112	0/-112
V19	15x30	0/-112	0/-112

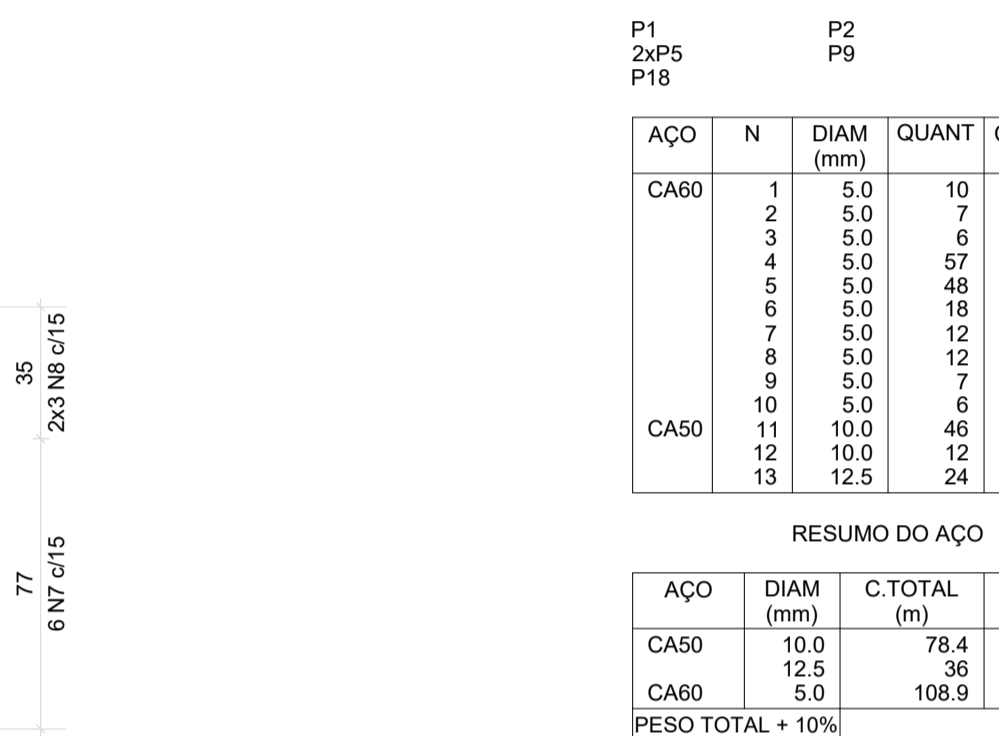
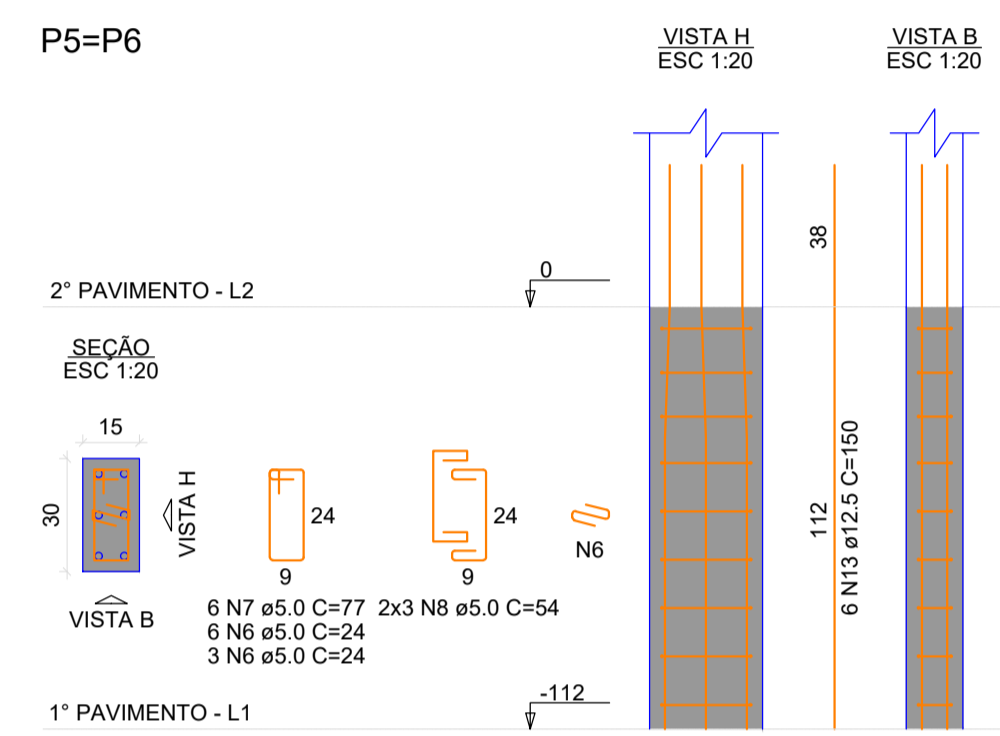
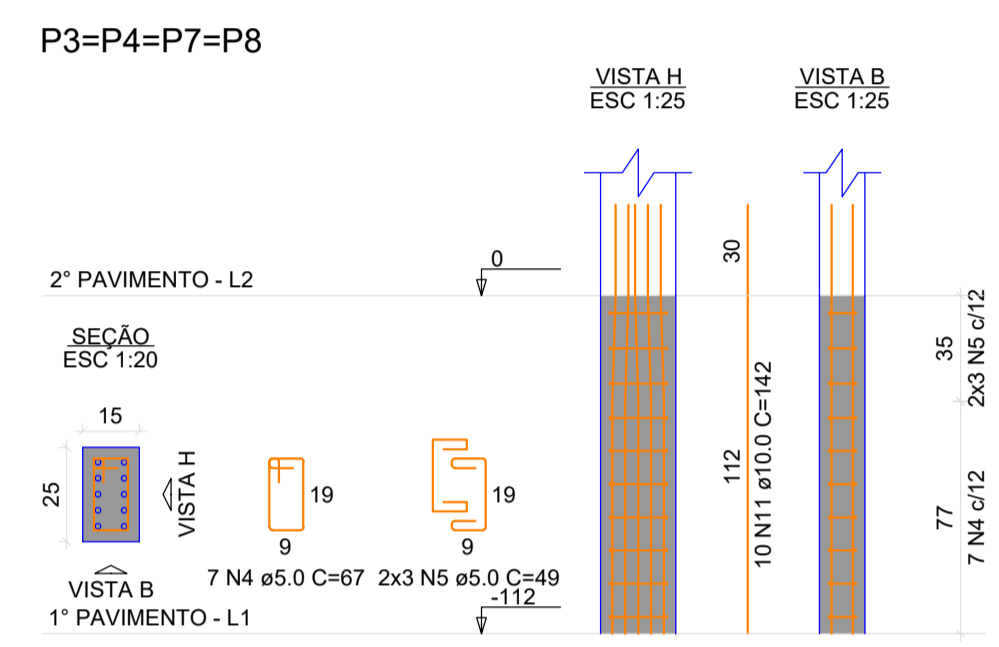
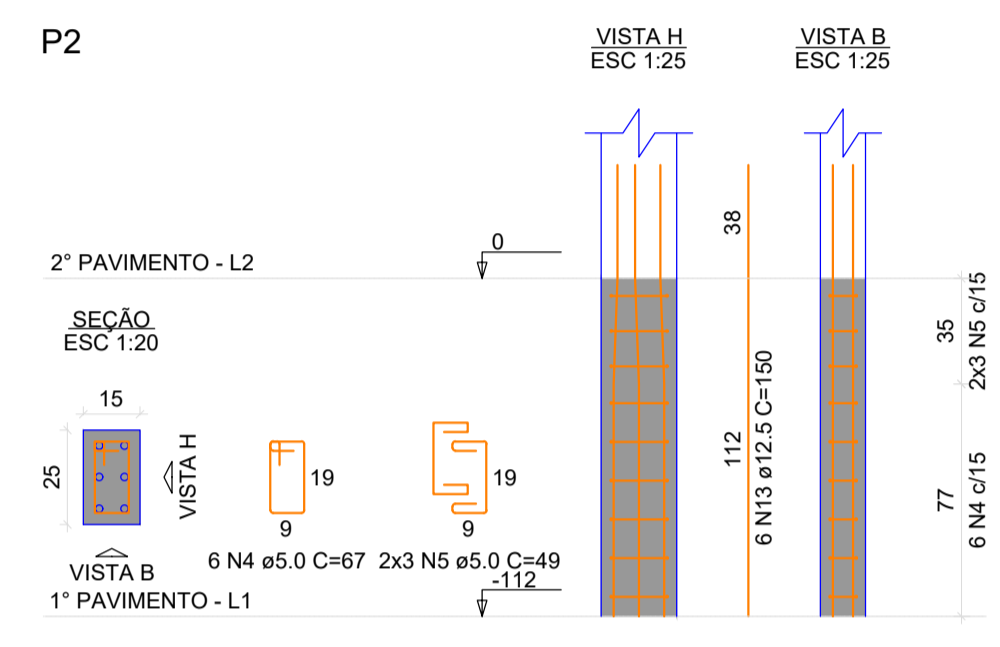
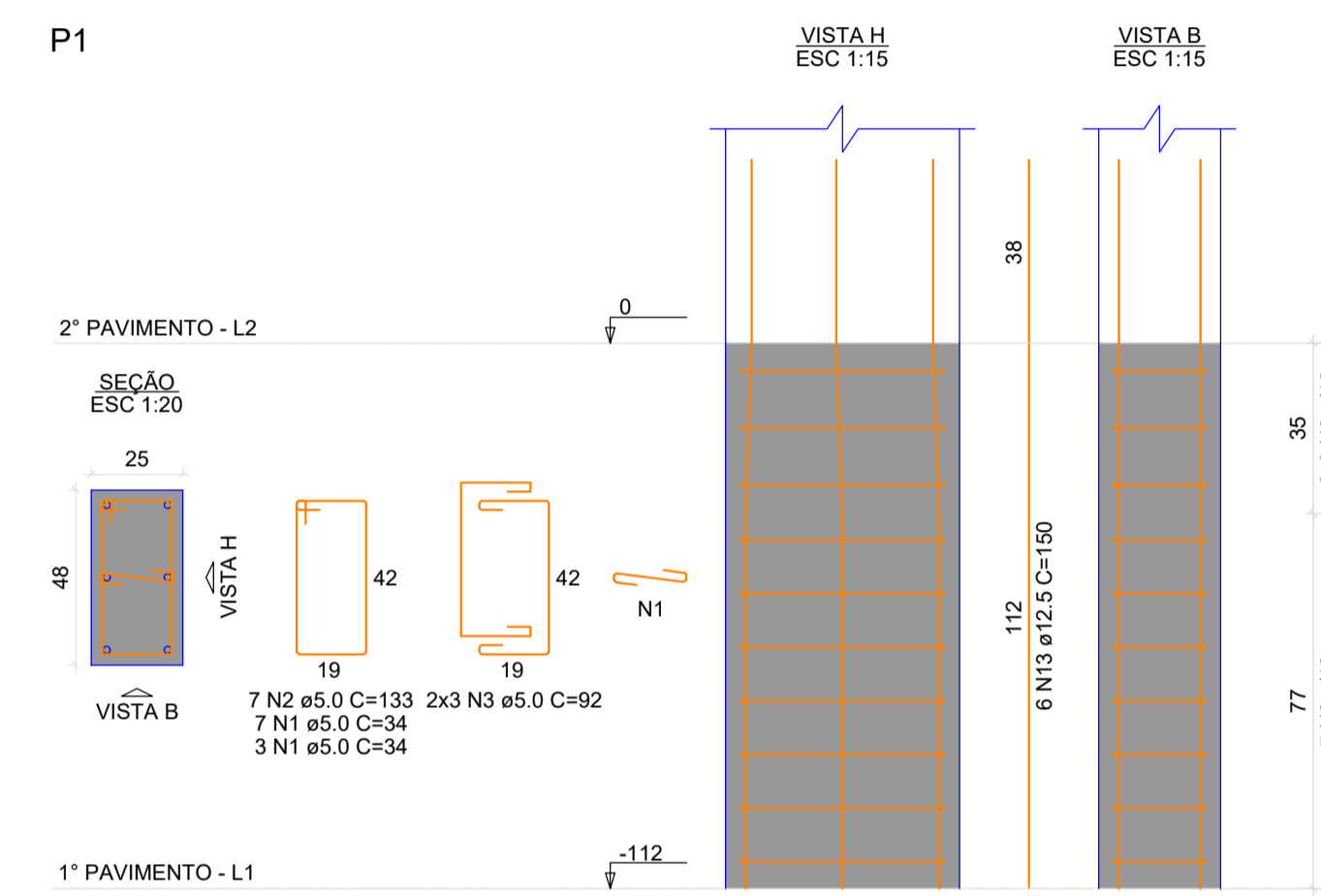
Pilares			
Nome	Seção (cm)	Elevação (cm)	Nível (cm)
P1	25x48	0	0
P2	15x25	0	0
P3	15x25	0	0
P4	15x25	0	0
P5	15x30	0	0
P6	15x30	0	0
P7	15x25	0	0
P8	15x25	0	0
P9	20x25	0	0
P10	15x25	0	0
P11	15x25	0	0
P12	15x25	0	0
P13	15x25	0	0
P14	15x25	0	0
P15	15x25	0	0
P16	15x25	0	0
P17	15x25	0	0
P18	15x25	0	0



Lajes							
Nome	Tipo	Altura (cm)	Elevação (cm)	Nível (cm)	Sobrecarga (kgf/m²)		
					Adicional	Acidental	Localizada
L1	Maciça	12	0	0	300	182	400
L2	Maciça	12	0	0	300	182	400
L3	Maciça	12	0	0	300	182	400
LE1	Maciça	12	0	0	547	159	400
LE2	Maciça	12	0	0	300	154	400

Características dos materiais		
fck (kgf/cm²)	Ecs (kgf/cm²)	Abatimento (cm)
350	294029	10.00

Dimensão máxima do agregado = 19 mm



RELAÇÃO DO AÇO

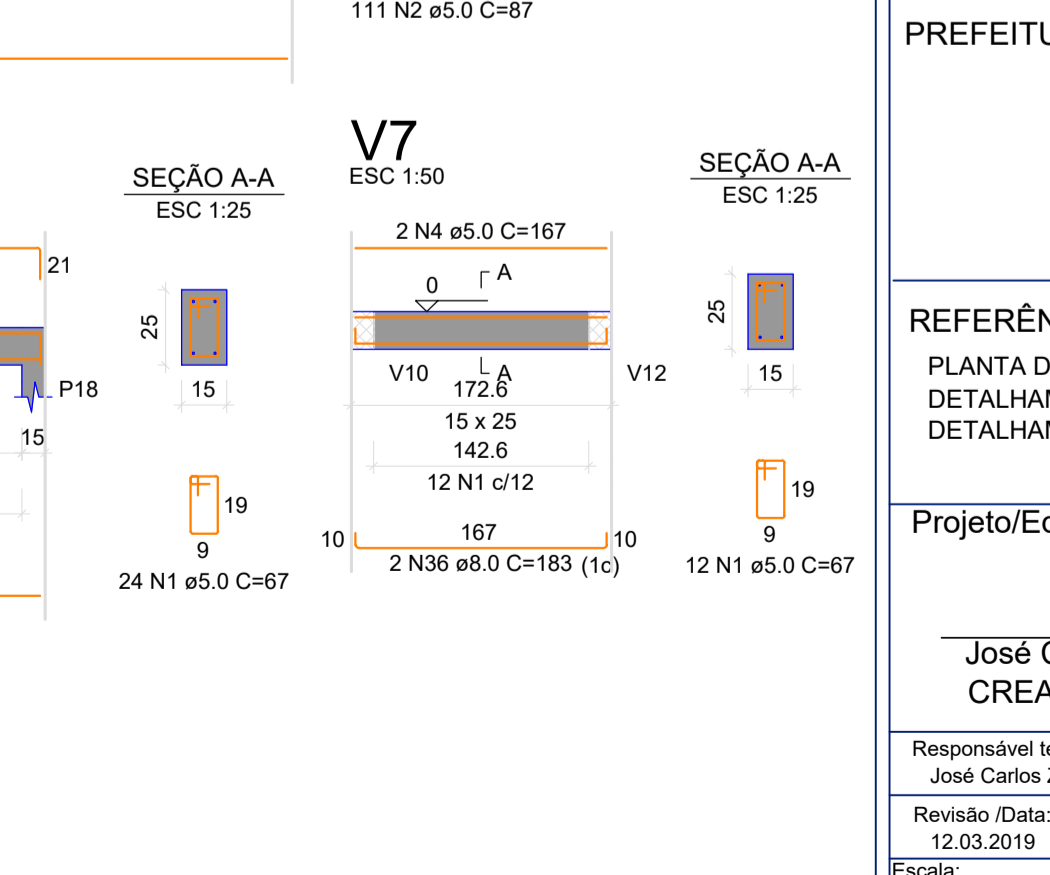
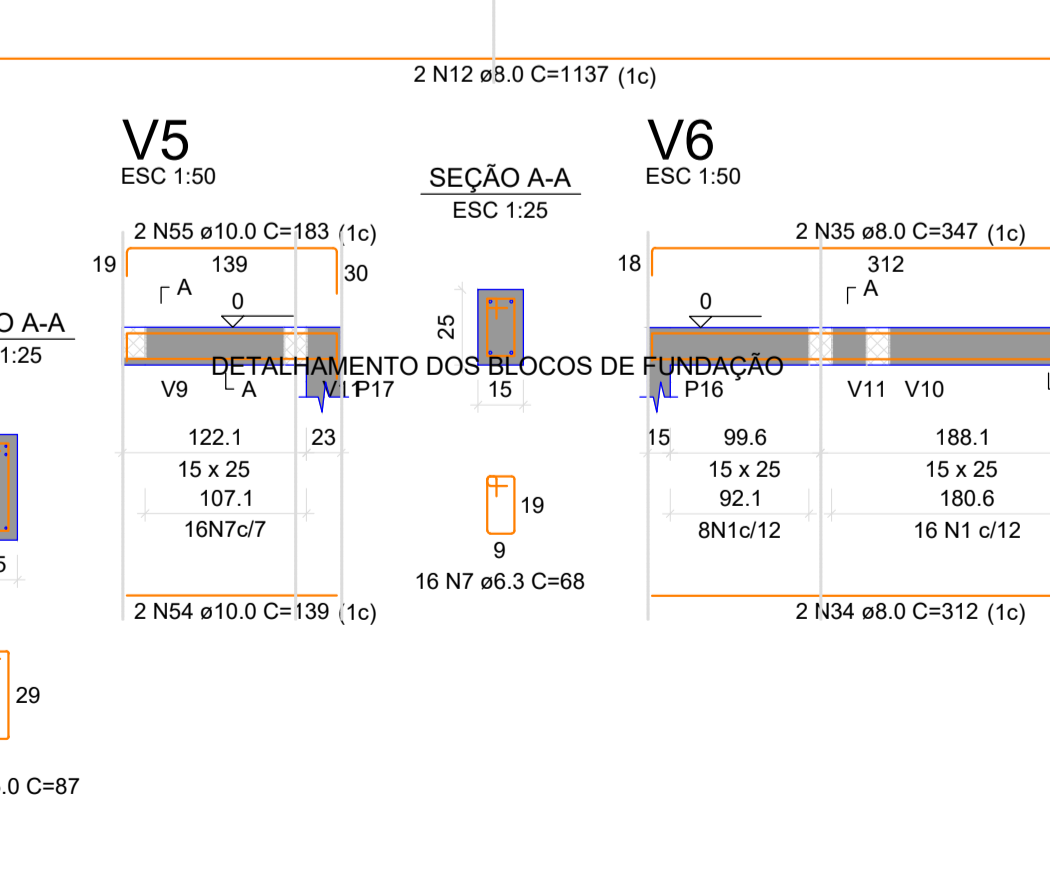
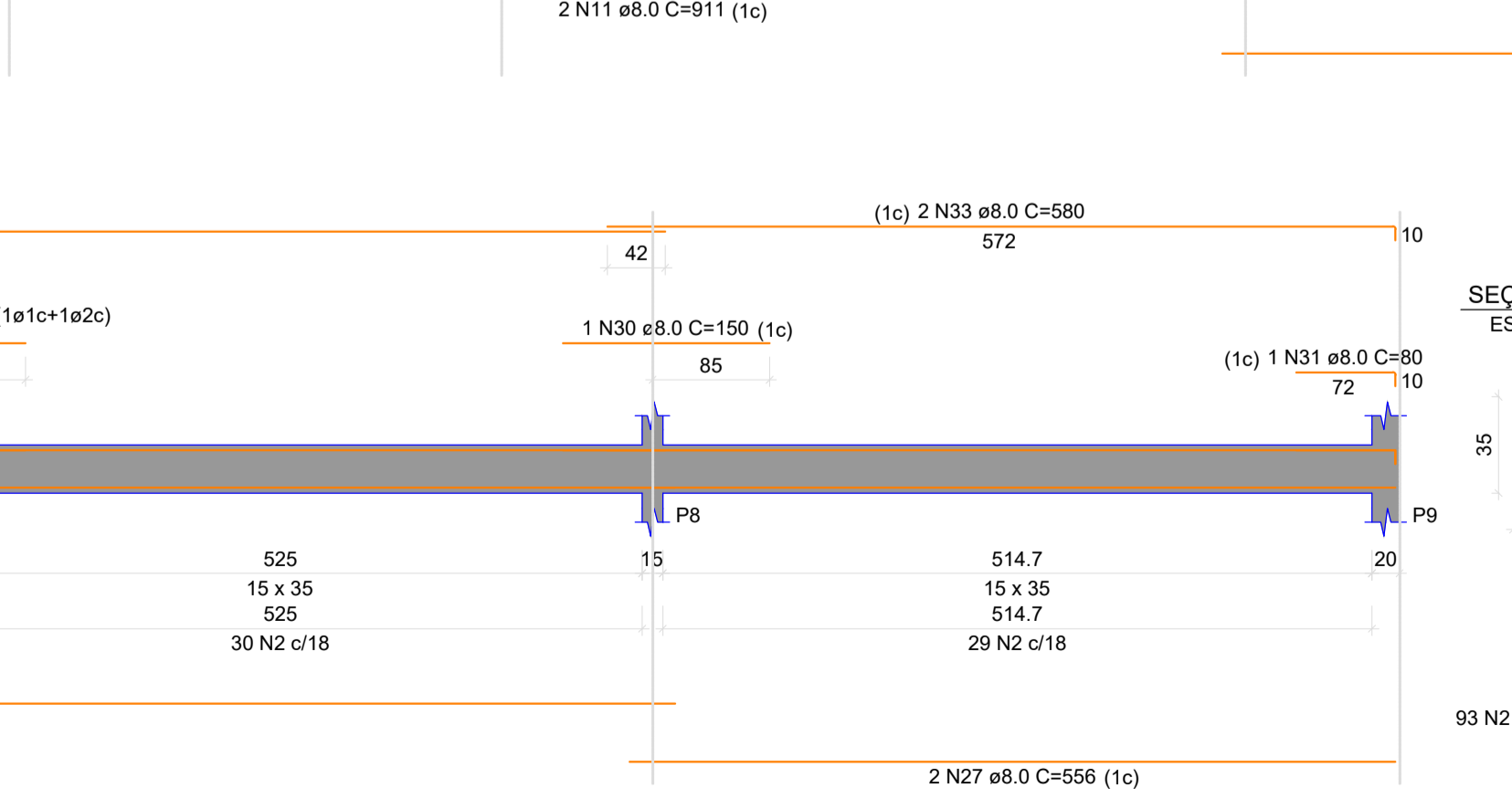
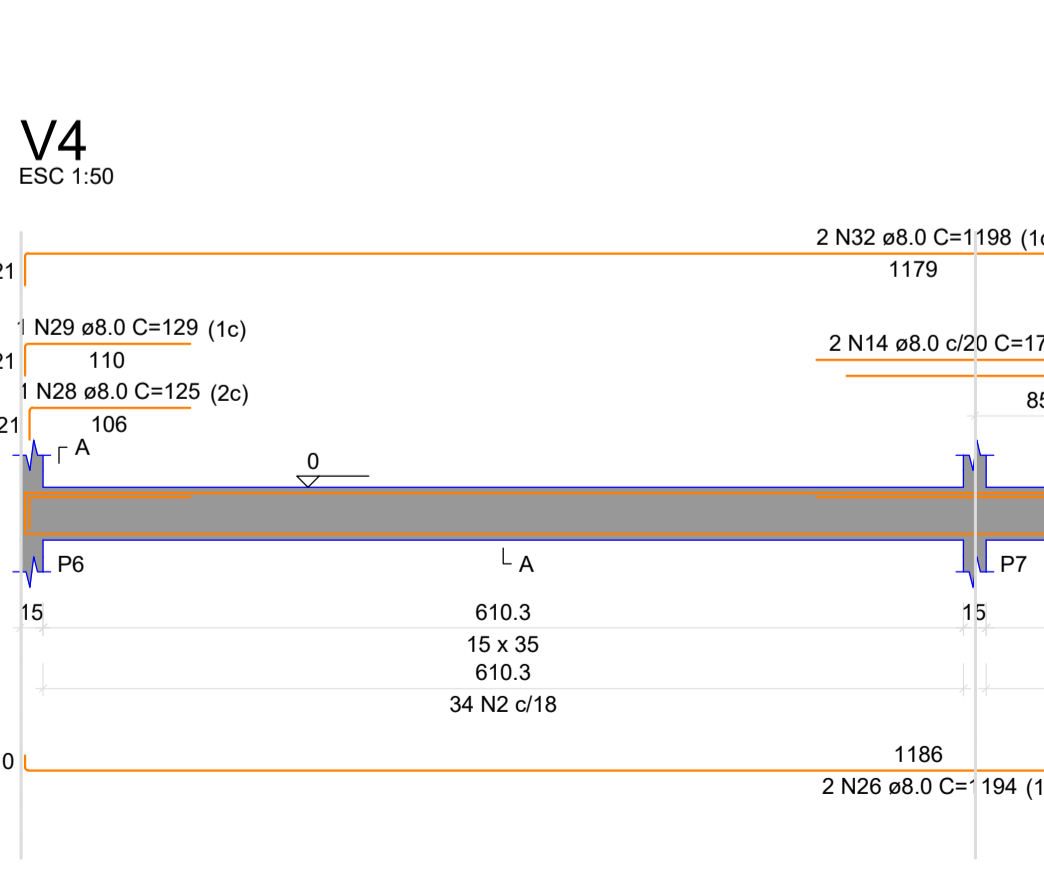
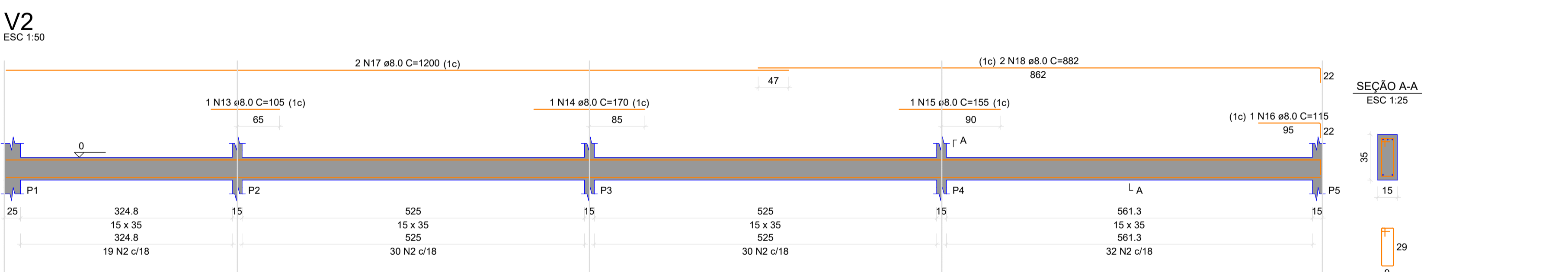
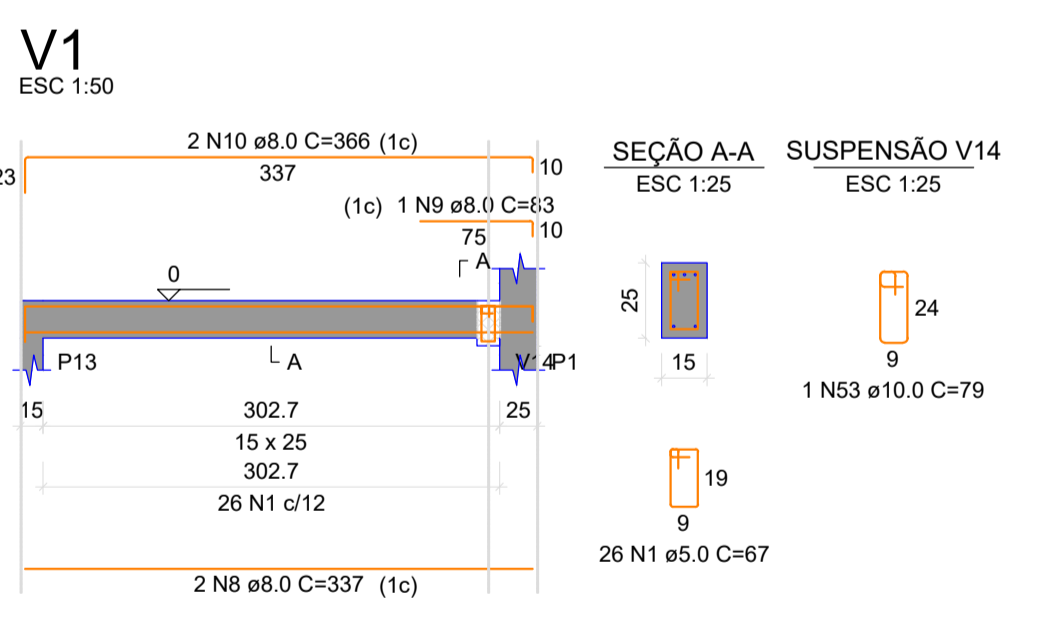
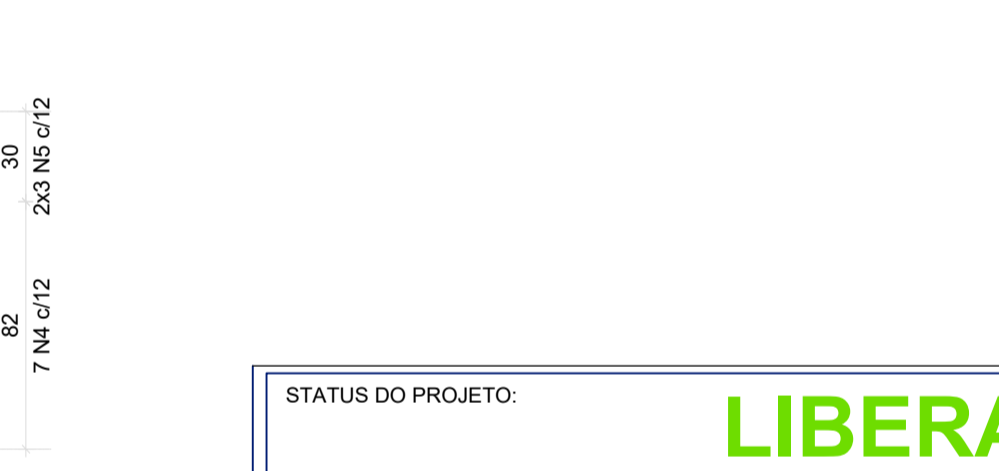
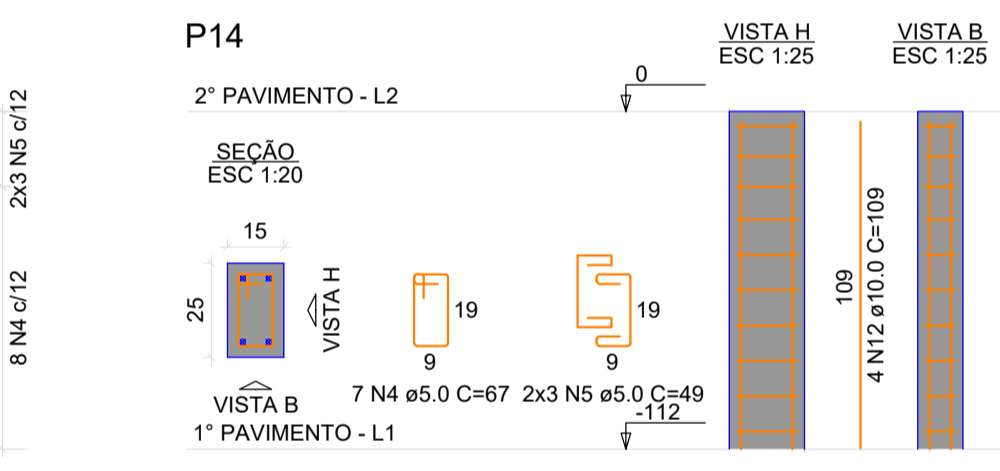
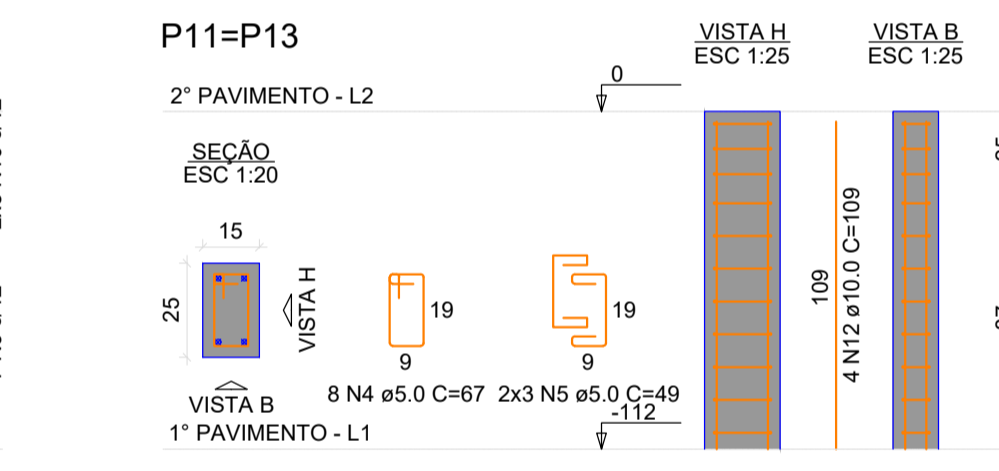
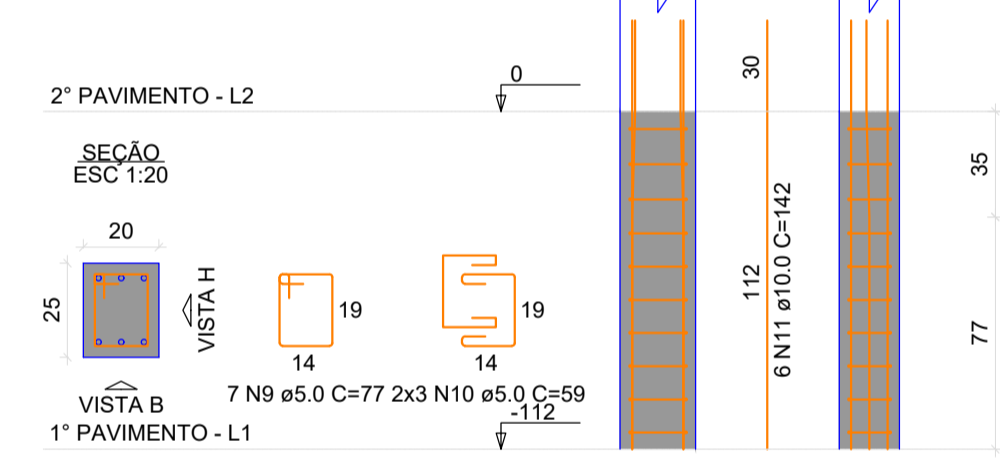
AÇO	N	DIAM (mm)	QUANT	C.UNIT (cm)	C.TOTAL (cm)
CA60	1	5.0	10	34	340
CA60	2	5.0	7	133	931
CA60	3	5.0	6	92	552
CA60	4	5.0	57	67	3819
CA60	5	5.0	48	49	2352
CA60	6	5.0	18	24	432
CA60	7	5.0	12	77	924
CA60	8	5.0	12	54	648
CA60	9	5.0	7	77	539
CA60	10	5.0	6	59	354
CA60	11	10.0	46	142	6532
CA60	12	10.0	12	109	1308
CA60	13	12.5	24	150	3600

RESUMO DO AÇO

AÇO	DIAM (mm)	C.TOTAL (m)	PESO (kg)
CA50	10.0	78.4	48.36
CA60	12.5	36	34.64
CA60	5.0	108.9	16.82

PESO TOTAL + 10% (kg): CA50 91.3, CA60 18.5

Volume de concreto (C-35) = 0.63 m³
Área de forma = 11.83 m²



STATUS DO PROJETO: **LIBERADO PARA EXECUÇÃO**

APROVAÇÃO

Obra: **REFORMA E AMPLIAÇÃO DO CENTRO ESPORTIVO DE DOUTOR PEDRINHO RUA PIONEIROS - B. CENTRO - DOUTOR PEDRINHO/SC**

PROJETO ESTRUTURAL - ARQUIBANCADA

CLIENTE: **PREFEITURA MUNICIPAL DE DOUTOR PEDRINHO**

ELABORADO POR: **ZANONÁ**

REFERÊNCIA: **PLANTA DE FORMA 2º PAVIMENTO DETALHAMENTO DOS PILARES DO 2º PAVIMENTO DETALHAMENTO DAS VIGAS 2º PAVIMENTO**

Projeto/Equipe técnica: **José Carlos Zandoná CREA/SC 042.499-5**

Responsável técnico: **José Carlos Zandoná**

Desenho: **RS**

Revisão /Data: **12.03.2019**

Nome do Arquivo

Escala: **INDICADA** Und. **METROS**

REVISÕES

Nº	DATA	DESCRIÇÃO	POR	REV.	APROV.	CLIENTE
01	12.03.2019	REVISÃO DO PROJETO - ANÁLISE C.E.F.	JT	-	-	-

EST Projeto Estrutural

04.11 PMPD

Doutor Pedrinho FEVEREIRO/2019